

# PARTNERSHIP PULSE

*...keeping with the beat of early childhood*



JANUARY 2024

Happy New  
year!

We are excited for all that 2024 has in store! "Don't cry because it's over, smile because it happened." - Dr. Seuss



*New Year, New Activities!*



## Zumbini

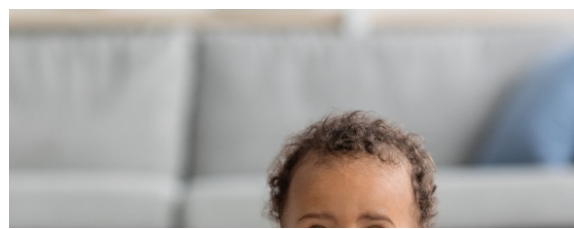
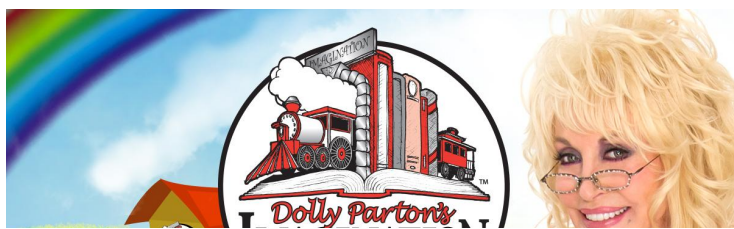
We are now offering Zumbini classes! Created by Zumba and BabyFirst, Zumbini is an early childhood education program that uses original music and movement to promote cognitive, social, fine/gross motor skills, and emotional development for children ages 0-4, all while creating the ultimate bonding experience for you and your child! Contact Delight Gilley at [dgilley@icpyc.org](mailto:dgilley@icpyc.org) or **980.759.1515**.

[Learn more.](#)

## Raising A Reader

Raising a Reader supports families with children ages 3-4 to build, practice and grow reading routines with their children while developing a lifelong love of reading. This evidence-based program rotates bright red bags filled with award-winning, multicultural books to take home and book share with the caring adults in their life. Raising a Reader will highlight new books each week and implement the stories through play. Contact Peyton Barrows at [pbarrows@icpyc.org](mailto:pbarrows@icpyc.org) or **704.380.3877** for more information.

[Learn more.](#)







## Dolly Parton's Imagination Library

The holidays may have come to an end, but with Dolly Parton's Imagination Library, you can give the gift of reading all year long - for FREE! Children will receive a book in the mail, once a month, until they turns 5 years old. Register today! As Dolly Parton says, "You can never get enough books into the hands of enough children."

[Register](#)



## 31 Days of Play

January can be cold, rainy, and leave you feeling stuck indoors. Ralph Waldo Emerson once said, "It is a happy talent to know how to play." Here are 31 new play ideas for a happy January!

[31 Days of Play](#)



## Safe Sleep for Your Baby

Each year in the United States, thousands of babies die suddenly and unexpectedly. Some of these deaths result from Sudden Infant Death Syndrome (SIDS) and other sleep related causes of infant death, such as suffocation. Click the button below for a tip sheet on how to create a safe sleep environment for your baby.



[Learn  
More](#)



## Safety Tip of the Month

New year, new house! As you clean and organize for the new year, remember to put household cleaning products up and away, out of children's reach and sight. Save the Poison Help number in your phone and post it visibly at home: 1-800-222-1222. Click the button below for more safety tips.

[Learn  
More](#)



REMINDER:

Our offices are closed:

January 1 (New Years Day)

January 15 (Martin Luther King Day)

The Iredell County Partnership for Young Children (ICPYC) is a public/private organization dedicated to measurably increasing learning and healthy development of children birth to age five in Iredell County. ICPYC provides services focused on raising the quality of early care and education, supporting families, advancing child health, and expanding literacy.



[www.iredellsmartstart.org](http://www.iredellsmartstart.org) • 704-878-9980 • [Donate](#)

Iredell County Partnership for Young Children | 734 Salisbury Road, Statesville, NC 28677

[Unsubscribe staylor@icpyc.org](mailto:unsubscribe_staylor@icpyc.org)

[Update Profile](#) | [Constant Contact Data Notice](#)

Sent by [info@icpyc.org](mailto:info@icpyc.org) powered by



Try email marketing for free today!